

# #9047 Extra Large Display Box Kit

by Houseworks Ltd.

Step-by-step assembly instructions

Copyright miniatures.com 2021, 2025

**PARTS LIST:**

- Base
- Side Wall (2)
- Back Wall
- Top
- MDF Divider
- Acrylic Pane

**SUPPLIES NEEDED:**

- Masking tape
- White glue (such as #1249 Weldbond)
- Damp clean cloth
- Exterior and interior finishes



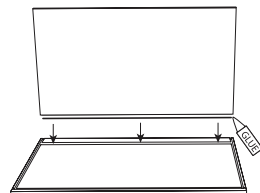
**GENERAL INSTRUCTIONS**

- Identify and inspect all parts using the Parts List.
- Thoroughly read the directions before starting.
- Set up a dedicated work area to avoid the need to unpack, repack, or move the project frequently.
- Use a clean, level, and dry work surface protected from glue spills.
- Dry fit the parts using masking tape to ensure everything aligns correctly before permanent assembly.

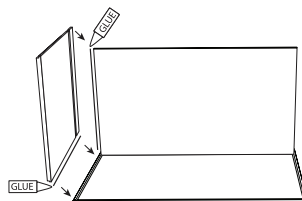
## Assembly Instructions

**Tip:** Plan the finishes for the interior and exterior at the dry-fit stage, before final/permanent assembly. It is easier to finish the panels as flat surfaces. Disassemble and finish as desired, then reassemble using glue.

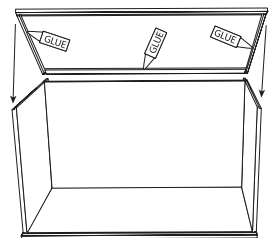
1. Apply glue along the bottom edge of the **Back Wall** and set it into the channel inset in from the back of the **Base**.



2. Apply glue along the edge of the **Back Wall** and along bottom edge of **Side Wall** and set into channel on **Base** and edge of **Back Wall**. Repeat on the other side.

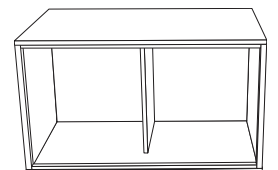


3. Apply glue inside the channels on back and sides of the **Top** and fit onto the top of the box. **DO NOT** put glue in front channel of top.



4. Slide the assembled section with **Pane** from the side into the **Top** and **Base** front grooves. **DO NOT GLUE**. This panel allows access from the front.

5. The extra piece of solid **MDF** with no grooves can be used as a divider to make the box into two rooms.



Assembly of the Extra Large Display Box Kit is now complete.